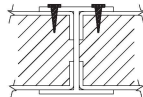
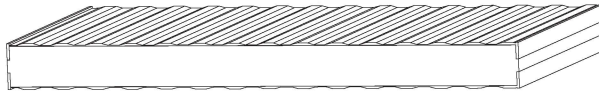




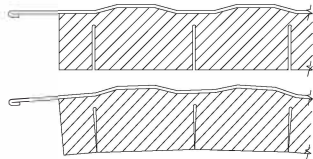
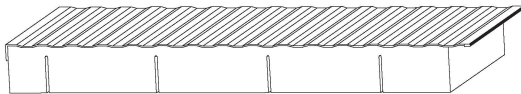
WHOLESALE PANEL SOLUTIONS

SQUARE EDGE PANELS



Panel Thickness: 1 1/2", 2" or 3"
Panel Width: 47 1/4" (coverage)
Panel Length: 6'-0" to 17'-0"
Skin Types: Galvalume, Galvanized, Pre-Paint & Aluminum
Skin Thickness: 26 gauge (Galvalume, Prep-Paint)
24 gauge **Stucco Empossed Aluminium**
Different gauges available on request
R-Value: R9.74 (1 1/2"), R12.99(2") & R19.47(3")
Density: 2.5 lbs./cu.ft. (minimum)

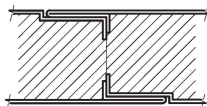
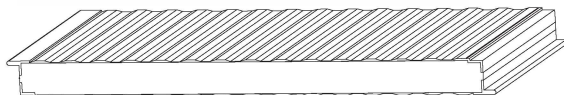
TANK PANELS



TANK PANEL FOAM HAS SAW CUTS EVERY 2 1/2". A TIGHTER BEND RADIUS CAN BE ACHIEVED BY ADDING MORE SAW CUTS.

Panel Thickness: 1 1/2" & 2"
Panel Width: 45" (coverage)
Panel Length: 6'-0" to 13'-0"
Skin Types: Galvalume, Pre-Paint & Aluminum
Skin Thickness: 26 gauge (Galvalume, Galvanized & Pre-Paint)
24 gauge **Stucco Empossed Aluminium**
Different gauges available on request
R-Value: R9.74 (1 1/2"), R12.99(2")
Density: 2.5 lbs./cu.ft. (minimum)

LAP EDGE PANELS



Panel Thickness: 1 1/2", 2" & 3"
Panel Width: 45" (coverage)
Panel Length: 6'-0" to 17'-0"
Skin Types: Galvalume, Pre-Paint
Skin Thickness: 26 gauge (Galvalume & Prep-Paint)
Different gauges available on request
R-Value: R9.74 (1 1/2"), R12.99 (2"), R19.47 (3")
Density: 2.5 lbs./cu.ft. (minimum)

*"EXCELLENCE in safety leads
to EXCELLENCE in business"*

● Brady Flett, President

Load Span Table

Panel Thickness	Span (ft)/ Maximum Uniformly Distributed Load (psf)													
	4'	5'	6'	7'	8'	9'	10'	11'	12'	13'	14'	15'	16'	17'
1.5"	54	43	36	31	27	24	20	17	14	12	10	9		
2"	72	57	48	41	36	32	28	24	20	17	15	13	10	
3"	108	86	72	62	54	48	43	39	33	28	24	21	19	16

Panel Weight Table

Double Skin Material - Painted 26ga/ Painted 26ga.	Weight Chart: lbs/sq.ft.
1.5"	1.6
2"	1.8
3"	2.1

Notes:

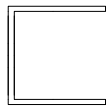
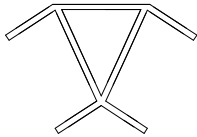
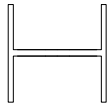
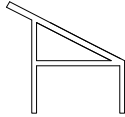
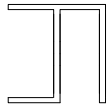
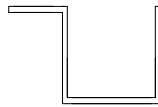
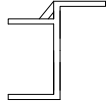
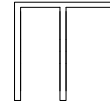
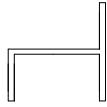
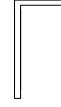
- Tables based on simply supported spans governed by the least of panel flexural capacity, shear capacity or maximum deflection/120, whichever governs.
- Spans are centre to centre of bearing. Minimum bearing is 2" (inches).
- Values are for Vortex Production Services structural insulated panels with 26 gauge (minimum 0.018" thick) sheet steelskins.
- Expanded polyurethane core materials for panels to be BASF Elastopor P1539R Resin/Elastapor P1001U Isocyanate Rigid Urethane Foam with a minimum density of 2.5 lbs. per cubic foot.
- Factor for safety of 2.5 applied on strength controlled values.
- Panel self weight must be deducted from horizontal applications.
- Thermal effects (thermal bowing) and the possible limiting capacity of connections to or bearing on the primary structural system have not been in the above listed values.

Flame Testing:

- Testing in accordance with CAN/UCL S102-07; Method of Test for Surface Burning Characteristics of Building Materials and Assemblies.

Flame Spread: 15
Smoke Developed: 175



	C-Channel		4/12 Roof Ridge
	H-Channel		4/12 Roof Receiver
	90° Corner Channel (long/extended)		Reverse Doorframe Channel (c/w weatherstrip groove)
	Doorframe Channel (c/w weatherstrip groove)		Cut-F Channel
	Cut-h Channel		Uneven Angle Channel

* Custom Metal Flashing Available Upon Request

Contact Us

7201-50th Avenue, Stettler, AB

Phone: 403-742-5505

Toll Free: 1-877-742-6900

Fax: 403-742-6901